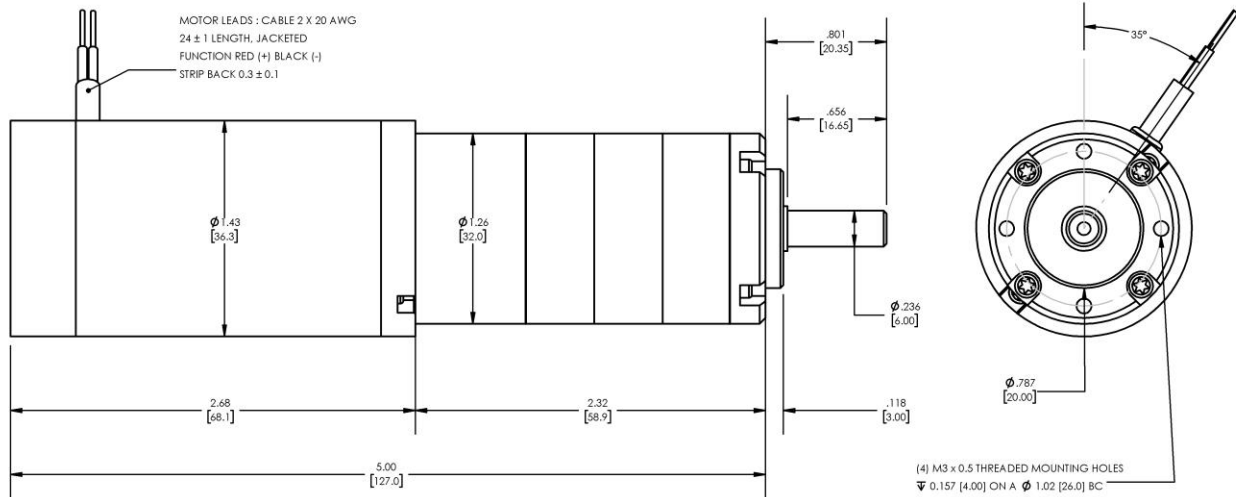


Model Number:
MMP TM36-268E-36V GP32-100


DIMENSIONS ARE INCHES [MM] UNLESS OTHERWISE STATED

PLANETARY GEARMOTOR OUTPUT PARAMETERS:	VALUE	UNITS	TOLERANCE
Gearhead Ratio (exact)	99.50 : 1		
Gearhead Shaft Output Speed (at full-load)	58	RPM	MAX
Gearmotor Rated Continuous Torque	16	In-Lbs	MAX
Gearmotor Rated Peak Torque	55++	In-Lbs	----
Gearhead Standard Backlash	96	Arc Minutes	MAX
Gearhead Efficiency	70%	----	----
Output Shaft Radial Load Capacity	23	Lbs	MAX
Output Shaft Axial Load Capacity	7	Lbs	MAX
Gearmotor Total Weight	1.2	Lbs	MAX

++ All Peak Torque values are dependent upon duty. Contact our sales office for details.

DC MOTOR PERFORMANCE PARAMETERS:	VALUE	UNITS	TOLERANCE
Rated DC Voltage	36	DC VOLTS	----
Rated Continuous Current	0.72	AMPERES	----
No-Load Speed	7660	RPM	MAX
Rated Speed	5816	RPM	+/- 15%
Rated Continuous Power Out	15	WATTS	+/- 15%
Rated Continuous Torque	3.6	OZ-IN	----
Peak Torque (motor only)	13	OZ-IN	----
No-Load Current	0.16	AMPERES	MAX
Back EMF Constant (Ke)	4.7	V/KRPM	+/- 10%
Torque Constant (Kt)	6.4	OZ-IN/AMP	+/- 10%
DC Armature Resistance	12.12	OHMS	+/- 15%
Armature Inductance	4.12	mH	+/- 15%
Armature temperature	155	DEG. C	MAX

NOTES:

- ENCODER & BRAKE OPTIONS AVAILABLE – [FOLLOW THIS LINK FOR DETAILS](#)
- NEMA MOUNTING FLANGE OPTION AVAILABLE – [FOLLOW THIS LINK FOR DETAILS](#)

MIDWEST MOTION PRODUCTS, INC

DESIGN, MANUFACTURING & DISTRIBUTION - MOTION CONTROL EQUIPMENT

www.midwestmotion.com

email: sales@midwestmotion.com